

INFLUENZA VACCINATIONS

2020 Information

INFLUENZA VACCINES 2020

DELIVERY OF SERVICES

OK Health Services provides a quality vaccination service to our customers by ensuring that we have robust booking processes and highly trained vaccinators. Our booking system includes support to customers in organizing the schedule of vaccinations, information flyers for employers and checklists for the requirements on the day of the booking.

On the day, we provide two registered nurses who will ensure that everyone receiving a vaccination will be well cared for. We do not require you to provide a first aider as we believe that sending two qualified nurses to your site provides the best option for the safety of your employees

We can provide vaccinations at our OK Health Services sites or at your company site, whichever is the most convenient to you. We also have a network of providers around the country so call us to discuss provision of service in any area of New Zealand.

If you have employees away on the day of the vaccinations, we can leave vouchers so that they can book in to have their vaccine at a time that works for them

Please note that due to the requirements of the standing orders that we work under as independent vaccinators we cannot vaccinate children under the age of 18.

WHY OFFER FLU VACCINES TO EMPLOYEES?

Flu vaccines remain one of the few benefits employers can offer employees that also have a direct and measurable benefit for the employer by reducing productivity losses due to illness over the winter periods. By providing vaccinations for your staff you will minimize additional stress caused by absence due to illness over the winter period.

Vaccination is the principal measure for preventing influenza. Various types of influenza vaccines have been available and used for more than 60 years. They are safe and effective in preventing both mild and severe outcomes of influenza.

Influenza rapidly spreads around the world in seasonal epidemics and imposes a considerable economic burden in the form of health care costs and low productivity.

FLU FACTS

Strike Rate:

- Influenza (flu) in humans is common. The virulent infection routinely affects between 10 and 20 percent of the New Zealand population resulting in reduced productivity and increased absenteeism.

Contagious:

- The influenza virus spreads rapidly where contact with others infected is common (e.g. office or work environments).
- Generally you are contagious from the day prior to experiencing symptoms until your symptoms have resolved.

Flu vs Common Cold:

- Influenza and the common cold are frequently confused. Many people complain of 'flu' when, in fact they are suffering from a cold. Symptoms of a cold usually last between 2 – 4 days whereas influenza infection has more severe symptoms often requiring bed rest, and last for as long as two weeks (approx).

Effectiveness of Vaccine:

- NZ Ministry of Health reports that the Influenza vaccine has shown to provide protection to between 70 and 90 percent of those receiving it.
- It is impossible to get Influenza from the Vaccine as it is purified and inactivated.

- The Vaccine stimulates the immune system and contains protection against the four most common strains of influenza identified as a health risk each year
- It is best to have the vaccine early if possible as the vaccine can take up to 2 weeks to be fully effective

WHAT ARE THE STRAINS FOR 2020

- A/Brisbane/02/2018 pdm09-like virus (H1N1)
- A/South Australia/34/2019-like virus (H3N2)
- B/Washington/02/2019-like virus (B/Victoria lineage)
- B/Phuket/3073/2013-like virus (B/Yamagata lineage)

Each year the strains of influenza present in the community are different – they change, relocate and mutate throughout the year. This means that you need to have the vaccine every year as the vaccine you had last year will have targeted a different virus

WHO WE WILL ADVISE TO SEE A GP FOR THEIR VACCINATIONS

- Those with severe allergies to egg or egg products
- If you have known allergies to neomycin, Polymixin and Gentamicin
- Those who have had a previous reaction to the influenza vaccine or other vaccines
- Anyone who has, or has had, Guillian-Barré Syndrome

TIME REQUIRED

Following your vaccination, you must wait in the designated area for 20 minutes. You can bring work or reading material to do while you are waiting.

FREQUENTLY ASKED QUESTIONS

WILL I BE PROTECTED FROM THE 'FLU, AND HOW LONG DOES IT TAKE TO BEGIN WORKING?

In 2020 we are offering the Afluria Quad Vaccine which protects against four strains of Influenza. The influenza vaccination protects against the four strains of the 'flu most likely to be around this coming winter and gives you 70-90% protection.

You won't be protected from the common cold. It takes about two weeks for immunity to develop, so if you have already been infected with the virus before you have produced antibodies you may still get the 'flu.

I HAD A FLU INJECTION LAST YEAR, WHY DO I NEED ANOTHER ONE?

Each year's injection is only effective for 6 months to a year. The influenza virus also changes each year so last year's vaccine will not protect you from this year's strains of the virus.

CAN I CATCH THE 'FLU FROM THE VACCINE?

The vaccine cannot give you the 'flu' as it contains no live viruses. The vaccine contains no blood products.

I HEARD I CAN GET IT FOR FREE FROM MY GP, IS THIS RIGHT?

Some people are eligible for a free vaccination through their GP if you are over 65, have a chronic illness or meet other criteria. For a complete list on who is eligible for free vaccinations at their GP clinic, please contact Ministry of Health or your GP.

ARE THERE SIDE EFFECTS?

Reactions to the vaccine are rare. A small number of people may get some redness or swelling at the site of the injection or feel slightly unwell or feverish for a day or two. You can put an icepack on the injection site if it's sore and take Paracetamol.

In very rare instances there may be a severe allergic reaction to the vaccine and the nurses will have with them emergency equipment. If you are going to have a severe reaction this is most likely to happen in the first 20 minutes post vaccination. For this reason, we ask you to wait in the presence of the nurse for 20 minutes after we give the injection.

After leaving the nurse if you feel that you have had an adverse reaction to the vaccine, please contact OK Health Services Ltd or your doctor.

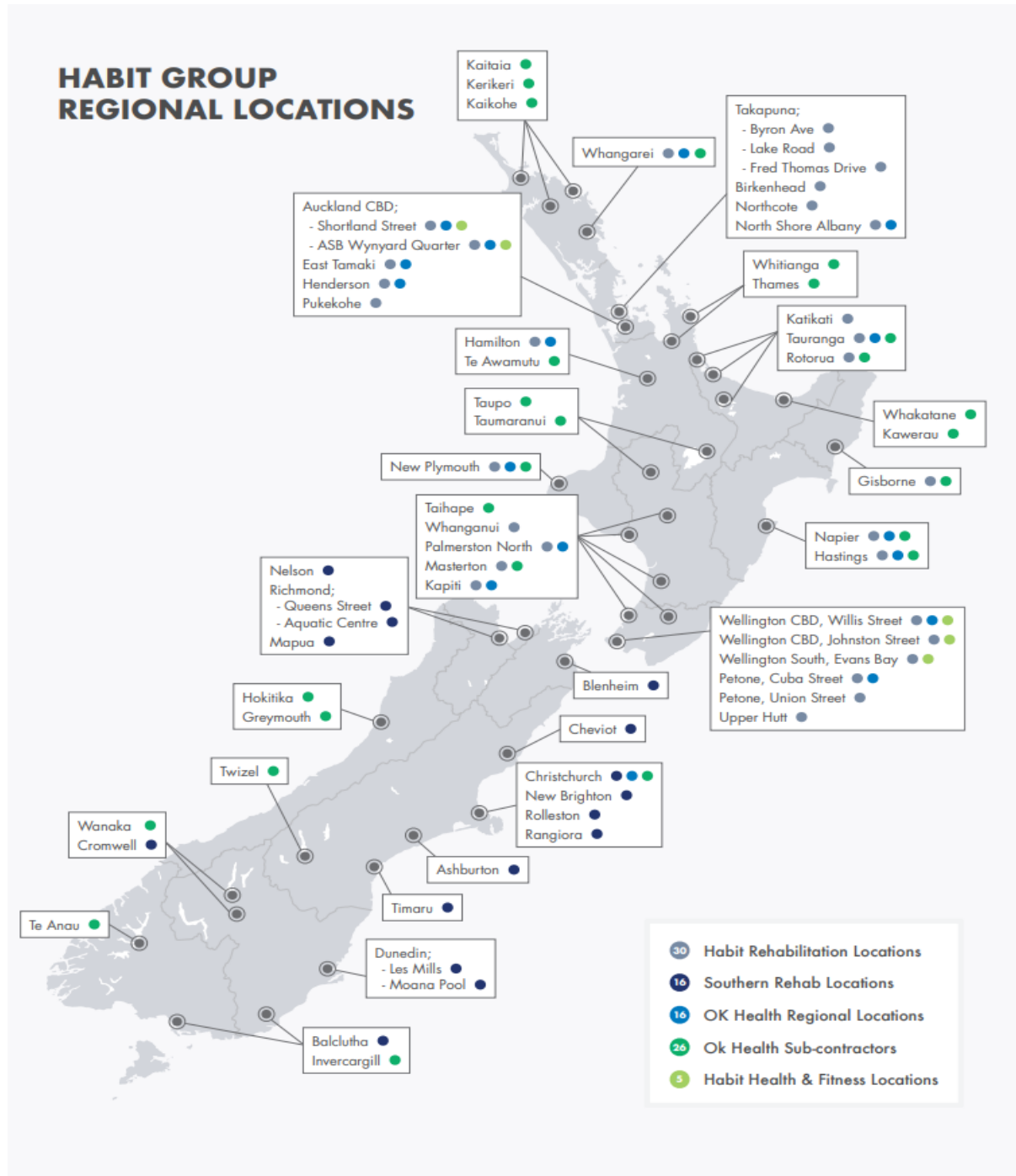
At the time of the vaccination we will give you a card to take with you detailing the vaccine you have been given – if you do require additional medical attention take this card with you to your medical practitioner so that they know what you have had

NATIONAL COVERAGE

OK Health is one of the few Occupational Health Providers who can provide national coverage for Influenza Vaccinations.

We have ten office locations around the country with cold chain accreditation which means that we can administer vaccines meeting all legislative and best practise guidelines.

For any location where we do not have our own office or an accredited sub-contractor, we contract with Green Cross Health to provide a voucher system which is redeemable through any Life or Unichem Pharmacy – thereby ensuring national coverage.



Proposal for Services

Please note that OK Health provide vaccination services with the use of two Registered Nurses as a matter of best practice. The safety of our clients is paramount, and we believe that providing two trained nurses for offsite vaccinations is essential for managing safety in the event of a reaction occurring.

All nurses are trained independent vaccinators working under Standing Orders from our Company GP. Additionally, all nurses have been trained in CPR to level 5 as per the requirements of the Ministry of Health Immunisation handbook 2017.

Prices are set on a per person basis and is an all-inclusive cost which includes

- Nurses Time
- Supply of Vaccine
- Supply of Consumables and Emergency Equipment
- Management of Documentation (including sending a copy to the persons GP)
- Follow up of any reactions

Clients are charged on the number of people booked – final confirmation of numbers is required 3 days prior to the booking. If people are unable to attend on the day of the booking a voucher will be left for them to redeem at an OK Health office. These vouchers must be redeemed in the year they are issued and cannot be carried over to the following year.

INFLUENZA VACCINATIONS			
Item	Description	Unit of measure	Price (exclusive GST)
Afluria Quad – 4 strain vaccine	Administered at Customer site for groups of at least 10 employees Minimum charge of \$320 applies for less than 10 people.	Per Person	\$32.00
Afluria Quad – 4 strain vaccine	Administered at Customer site for groups of between 20 – 40 employees	Per Person	\$30.00
Afluria Quad – 4 strain Vaccine	Administered at Customer site for groups of over 40 employees	Per Person	\$28.00
Afluria Quad 4 strain vaccine	Administered at OK Health Premises	Per Person	\$26.00
Voucher for Influenza Vaccination for Individual Employees not able to attend a clinic	Administered at a Life or Unichem Pharmacy Nationally Online Voucher will be emailed to the individual for redemption at a time suitable to them	Per Voucher	\$35.00